

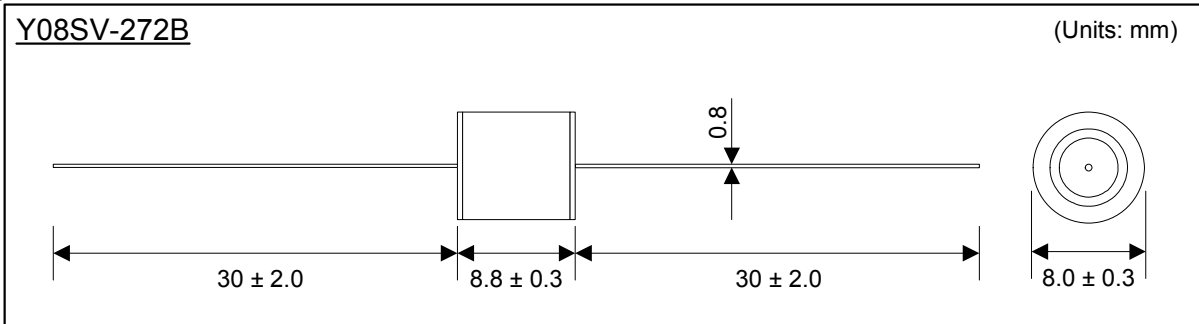
Two Electrode Gas Tube Surge Arrester

Part Number: Y08SV-272B



Features:

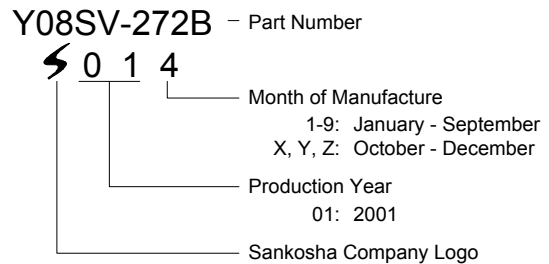
- UL 1449 & UL1414 Recognized
(File E96234 & E165829)
- 100% Lead-Free (RoHS Compliant)
- IEC60950 Line Isolation
- 3.1 mm Internal Electrode Gap
(Meets VDE Gap Requirement)
- ISO 9001 Certified



Applications:

- Transient Voltage Surge Suppression (TVSS)
- AC Line Input Protection
- Power Supplies
- CATV Systems
- Antennas
- Test Equipment
- Set-top Boxes

Marking Example: Part Number Y08SV-272B



Electrical Characteristics

| | | | | | |
|----|---------------------------|----------------|----------------|------------------------|------------------|
| 1. | DC Breakdown Voltage | 5 kV/sec | 2430 - 3000V | | |
| 2. | Impulse Breakdown Voltage | 1 kV/μsec | < 3900V | | |
| 3. | Insulation Resistance | DC 1000V | > 10,000 M-ohm | | |
| 4. | Capacitance | 1 MHz | < 1.0 pF | | |
| 5. | Impulse Discharge Current | 8/20 μsec | 10 kA | 1 Time | |
| | | 8/20 μsec | 3 kA | Each Polarity 10 Times | 3 Min. Intervals |
| 6. | Impulse Life | 8/20 μsec 100A | > 300 times | 1-2 Minute Intervals | |

After Life Tests

| | | | | | |
|----|---------------------------|-----------|--------------|--|--|
| 7. | DC Breakdown Voltage | 5 kV/sec | 2230 - 3170V | | |
| 8. | Impulse Breakdown Voltage | 1 kV/μsec | < 4200V | | |
| 9. | Insulation Resistance | DC 1000V | > 1 M-ohm | | |

SANKOSHA

SANKOSHA